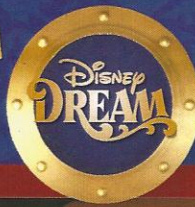


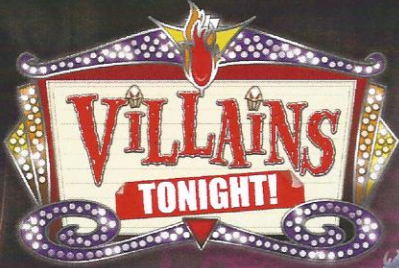
PERSONAL NAVIGATOR



FRIDAY, DECEMBER 7, 2012

Sunrise: 6:42 a.m. Sunset: 5:20 p.m.
 Evening Attire: Pirate/Cruise Casual
 All Ashore: 9:45 a.m.
 All Aboard: 6:00 p.m.
 Gangway: Deck 1, Midship, & Deck 1, Forward
 Friday: Sunny High: 75°F/24°C
 Saturday: Partly Sunny High: 73°F/23°C
NASSAU

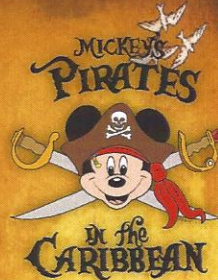
WALT DISNEY THEATRE



DECKS 3 & 4,
 FORWARD
 6:15 P.M.
 & 8:30 P.M.



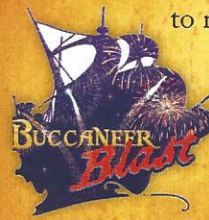
Assistance available at the entrance to the Walt Disney Theatre 30 minutes prior to show time.



7:45 - 8:05 p.m.
Deck Stage, Deck 11, Midship marks the spot
 It's a Pirate Celebration, me hearties!
 Come experience all the pirate fun alongside Captain Mickey Mouse and his famous Pirate Crew.
 (Weather Permitting)

Buccaneer Blast Fireworks

What's a pirate party without some fireworks to remind the other ships who be ruling the oceans blue?

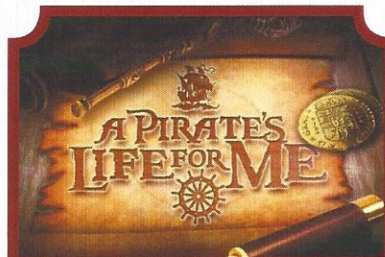


10:30 p.m.
Decks 11 & 12, Midship mark the spot
 Fireworks will be on display Starboard side - seen best from Deck 11, center pool area, and on Deck 12.

Nassau Port Information

While you will find many great experiences in Nassau, there have been reports of increased crime, including assaults and robberies involving tourists in the area. As in any large city, you'll want to take some basic precautions to make the most of your time ashore.

- Be aware of your surroundings at all times, just as you would in your normal daily activities.
- Avoid shortcuts, narrow alleys or poorly lit streets. We recommend that Guests only visit the downtown shopping areas and other tourist locations.
- Leave valuables in your room safe and avoid carrying large amounts of cash. Exercise caution when using ATMs. Cameras and handbags should be carried out of sight and secured to you with a strap.
- Leave passports, air transportation tickets and other travel documents in your room safe. When going ashore, each adult is required to carry a Driver's license, copy of passport or other government-issued photo ID.
- If travelling by taxi, use only licensed taxi operators.
- In general, use the same level of precaution you would use in any tourist destination.
- Most crimes are easier to commit in dark, unlit areas. You should stay out of these types of areas and consider returning to the ship before nightfall. If you stay out at night, please be extra vigilant about your personal safety.



GAME SHOW

Calling all Pirates, we be! If ye have an adventurous spirit or pirate savvy, come spin the "Wheel of Destiny," for a treasure trove of fun be ripe for the takin' in this action packed pirate game show.

6:30 & 9:45 p.m.
 D Lounge,
 Deck 4, Midship

Don't Miss:

Making of the Dream

Evolution, Deck 4, Aft - Families - 11:30 a.m.
 Evolution, Deck 4, Aft - Adults - 2:00 p.m.

Explore the origins of Disney Cruise Line — and the latest and greatest innovations conjured especially for the Disney Dream, in this fascinating and entertaining behind-the-scenes program.

Pirate Trivia

687 Pub, Deck 4, Aft - 2:00 p.m.
 D Lounge, Deck 4, Midship - 9:15 p.m.

Test your nautical knowledge with your Cruise Staff in this fun Pirate Trivia.

Disney Animation: Creating a Character

D Lounge, Deck 4, Midship - 2:00 p.m.

Go behind the scenes at Walt Disney Animation Studios and learn the principles that make animation work. Try your hand at creating your own easy animation demonstration in this fun and fascinating enrichment program.

Adult Krazy Karaoke

Evolution (18+), Deck 4, Aft - 11:00 p.m.

Take to the stage, grab a microphone and sing along to your favorite song with your Club Host, David, and DJ Marius.

Welcome to Nassau, capital of the Bahamas. It is not too late to book an amazing adventure to Blue Lagoon Island, Atlantis, or you could book a snorkeling adventure.

All Port Adventures meet onboard the ship in Nassau. Please check your tour tickets for meeting times and locations.



DINNER MENU

Animator's Palate: Pacific Rim Cuisine
 Enchanted Garden: Continental Market
 Royal Palace: French Dinner

DRINK OF THE DAY

Yellow Bird (Alcoholic)
 Parrot Song (Non Alcoholic)

IMPORTANT NUMBERS

Fire/Security: 7-3001
 Medical Emergency: 7-3000
 Health Center: 7-1923

FAMILY ACTIVITY HIGHLIGHTS

MAKING OF THE DREAM

Evolution, Deck 4, Aft - 11:30 a.m.

Explore the origins of Disney Cruise Line — and the latest and greatest innovations conjured especially for the Disney Dream, in this fascinating and entertaining behind-the-scenes program.



CHIP IT GOLF (12+)

Lobby Atrium, Deck 3, Midship - 1:00 p.m.

It's par for the course for our Guests 12 and older to compete on our special "greens" in this fun tournament.

FAMILY CRAFTS

D Lounge, Deck 4, Midship - 1:15 p.m.

An array of fun projects for you to choose from. Bring the whole family, as there is something to create that will certainly please everyone!

DISNEY VACATION CLUB® GROUP PRESENTATION

Evolution, Deck 4, Aft - 3:00 p.m.

Want to learn more about taking magical vacations year after year? Stop by our interactive group presentation to find out more information from a Disney Vacation Club representative.

JEWISH SABBATH

Outlook, Deck 14, Midship, 5:15 p.m.

A quiet space is reserved for those wishing to conduct their own service.



A PIRATE'S LIFE FOR ME

D Lounge, Deck 4, Midship - 6:30 & 9:45 p.m.

Calling all Pirates, we be! If ye have an adventurous spirit or pirate savvy, come spin the "Wheel of Destiny," for a treasure trove of fun be ripe for the takin' in this action packed pirate game show.

MICKEY'S PIRATES IN THE CARIBBEAN

Deck Stage, Deck 11, Midship - 7:45 p.m.

It's a Pirate Celebration, me hearties! Come experience all the pirate fun alongside Captain Mickey Mouse and his famous Pirate Crew. Play, dance and acquire all pirate skills needed to become an official member of Mickey's Pirate Crew!



ADULT ACTIVITY HIGHLIGHTS

SENSES SPA SEMINARS

Body Sculpt Boot Camp (Fee Applies) - Goofy's Sports Deck, 7:30 a.m.

Wake Up & Stretch - Senses Fitness Center, 9:00 a.m.

Good Feet Seminar: Walking in Comfort - Senses Spa & Salon, 9:30 a.m.

Group Cycling (Sign Up Required) - Senses Fitness Center, 10:30 a.m.

Seminar: Acupuncture - A Life Changing Experience - Senses Fitness Center, 10:30 a.m.

Good Feet Seminar: Improving Posture - Senses Fitness Center, 3:00 p.m.

Seminar: Detox for Health and Weight Loss - Senses Fitness Center, 4:00 p.m.

Pathway to Pilates - Senses Fitness Center, 5:00 p.m.



TASTING SEMINARS

Champagne Tasting - Pink, 1:00 p.m.

Martini Tasting - Meridian, 4:00 p.m.

Mixology - Skyline, 4:00 p.m.

Tequila & Margarita Tasting - Evolution, 5:00 p.m.

Cognac Tasting - Meridian, 9:30 p.m.

Please make reservations for tastings at Guest Services for a nominal fee.

Tasting seminars are only for Guest's 21 and older.



X-BOX CHALLENGE

687 Pub, Deck 4, Aft, 4:30 p.m.

MIXER

Currents, Deck 13, Forward, 10:00 p.m.

ART OF THE THEME SHOW TOUR

Meet at Meridian, Deck 12, Aft - 2:45 p.m. (Repeated tomorrow at 2:30 p.m.)

A walking tour that highlights the ship's design of Disney culture, theming and artistry.



ESPN DREAM TEAM DRAFT DAY

687 Pub, Deck 4, Aft - 5:00 p.m.

Play ball! Join the "Commissioner" and engage in this interactive fantasy baseball draft unlike anything you've ever seen!

ADULT KRAZY KARAOKE

Evolution, Deck 4, Aft - 11:00 p.m.

Take to the stage, grab a microphone and sing along to your favorite song with your Club Host, David, and DJ Marius.

SENSES SPA JACKPOT BINGO

D Lounge, Deck 4, Midship

Card Sales - 4:00 p.m.

Game Starts - 4:15 p.m.

Four cash prizes up for grabs, plus great spa prizes to be won, including facials and massages courtesy of the Senses Spa & Salon. Plus, a chance to play for the snowball jackpot!



YOUTH ACTIVITIES HIGHLIGHTS

DINE & PLAY

A convenience for families dining at 8:15 p.m., our Youth Activities Counselors will be available at 9:15 p.m. at the entrance of Royal Palace, Enchanted Garden and Animator's Palate dining rooms to bring registered children to join the fun in the Youth Activity areas.



Deck 5, Midship (7-5864) 9:00 a.m. - 1:00 a.m.

OPEN HOUSE

8:00 - 9:00 a.m.
Your chance to see our toddler space, It's A Small World Nursery.



Deck 5, Midship (7-1440) 11:00 a.m. - 11:00 p.m.
(3 - 12 years old)

SO YOU WANT TO BE A PIRATE?

1:30 & 6:15 p.m.
Have you learned about life on the high seas? Do you have what it takes to be a pirate? Join Captain Hook and his friends to find out!

ALOHA LUAU

2:45 p.m.
It's party time, Hawaiian style! Come join us for a Luau experience and learn how to dance like Lilo & Stitch.



Deck 5, Midship (7-1445) 9:00 a.m. - 1:00 a.m.
(3 - 12 years old)

ANYONE CAN COOK

7:15 p.m.
Anyone can cook as we work together to create some of our favorite treats!

PIRATES OF THE CARIBBEAN: TIDES OF FORTUNE

8:30 p.m.
Inspired from the Pirates of the Caribbean saga, during this interactive computer game, cruisers in the Oceaneer Lab get a chance to sail the seven seas!



Deck 13, Midship (7-9743) 10:00 a.m. - 1:00 a.m.
(11 - 14 years old)

GENDER WARS

12:15 p.m.
Join your Edge counselors as we see who reigns supreme in this ultimate battle of the sexes.

THAT'S HILARIOUS

9:30 p.m.
A game of quick wit and improvisation where you become the star of the show. Work with your fellow cruisers to perform sketches and applaud loudly as you each have the chance to perform to a live audience.



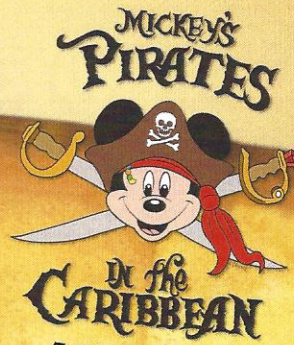
Entrance on Deck 4, Forward (7-9417)
11:00 a.m. - 2:00 a.m.
(14 - 17 years old)

SUPER SLOPPY SCIENCE

4:45 p.m.
Join Professor Make-O-Mess in some of the most extreme experiments you will ever see in the world of Super Sloppy Science!

A PIRATE'S LIFE FOR ME

D Lounge, Deck 4, Midship - 11:45 p.m.
Calling all Pirates, we be! If ye have an adventurous spirit or pirate savvy, come spin the "Wheel of Destiny," for a treasure trove of fun be ripe for the takin' in this action packed pirate game show.



7:45 - 8:05 p.m.
Pirate Games start at 7:30 p.m.
Deck Stage, Deck 11, Midship

It's a Pirate Celebration, me hearties!
Come experience all the pirate fun alongside Captain Mickey Mouse and his famous Pirate Crew.
(Weather Permitting)



Buccaneer Blast Fireworks
What's a pirate party without some fireworks to remind the other ships who be ruling the oceans blue?

10:30 p.m.
Decks 11 & 12, Midship
mark the spot

Fireworks will be on display Starboard side
Seen best from Deck 11, center pool area, and on Deck 12.

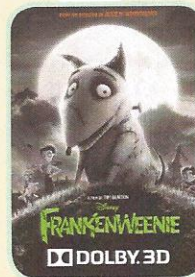
Club Pirate

If ye be a fan of Pirates of the Caribbean, tis time to revel in the night at the hottest dance club in all the seven seas with Guest DJ Christian Gama.
(Immediately following Buccaneer Blast)

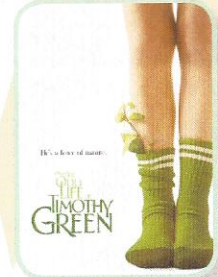


BUENA VISTA THEATRE

Today's Movies



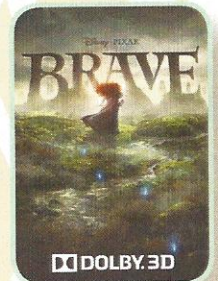
10:15 a.m.
Run Time: 1 hr 31 min
Rating: PG



12:15 p.m. - **CC**
Run Time: 1 hr 49 min
Rating: PG



2:30 & 11:00 p.m.
Run Time: 2 hr 32 min
Rating: PG-13



5:30 & 8:15 p.m.
Run Time: 1 hr 45 min
Rating: PG

MORE TO ENJOY WHILE ONBOARD



BOOK YOUR NEXT CRUISE TODAY AND SAVE

Don't waste time, book your next cruise today. You'll save 10%, receive up to a \$200 onboard credit, and pay a reduced deposit! Tune to Channel 8 on your stateroom TV for details and visit the Future Cruise Sales Desk, Deck 4, Midship.



DISNEY VACATION CLUB® GROUP PREVIEW

Want to learn more about taking magical vacations year after year? Please see a *Disney Vacation Club* representative on Deck 4, Midship, or call 7-2805 from your stateroom phone for more information about our interactive group presentation.



DIAMONDS FOR BREAKFAST - NASSAU SHOPPING

8:00 a.m. to 10:00 a.m. Shopping Desk, Deck 4, Midship. This is your last chance to see Summer and Vlad! Make sure you collect your FREE Savings Ashore Kit and VIP Cards before going ashore. Summer and Vlad are also your onboard diamond & gemstone specialists and are here to ensure you are well taken care of in Nassau and get the highest quality merchandise and best deals possible.

ONBOARD AIRLINE CHECK IN

If you would like to have your boarding passes printed for you onboard and have your luggage taken to the airport for you, 12:00 p.m. today is the last chance to enroll if eligible. Guest Services, Deck 3, Midship.

SURF @ SEA

\$0.75 per minute, or save money by buying blocks of time. \$27.50 for 50 minutes, \$40 for 100 minutes and \$75 for 250 minutes. Wireless information sheets are available at Guest Services, Deck 3, Midship. **Please note: Due to satellite connectivity, onboard internet service will be noticeably slower than you may be accustomed to and may at times be interrupted or unavailable.**

FINE DINING RESERVATIONS

Treat yourself to the ultimate culinary experience at sea. At Remy and Palo the enchantment of sea meets with elegance for a once-in-a-lifetime dining experience. Service/Cover charges will apply, please call 7-9734 for reservations to secure the last available spots.



Welcome to Nassau, capital of the Bahamas. It is not too late to book an amazing adventure to Blue Lagoon Island, Atlantis, or you could book a snorkeling adventure. And don't forget, we will be arriving to Disney's Castaway Cay tomorrow, so plan ahead to ensure your first choice of adventure is available. Also, ask our team about the exclusive Getaway Packages, available onboard only.

All Port Adventures meet onboard the ship in Nassau. Please check your tour tickets for meeting times and locations.

SHOPPING

JOIN THE CREW OR WALK THE PLANK

Sign ye up to plunder and pillage with pirate swords and eye patches, and find your very own pirate costume. All supplies for tonight's adventure can be gathered at Mickey's Mainsail, Deck 3, Midship and Quacks, Deck 11, Midship.

DISNEY CRUISE LINE FALL FASHIONS

Celebrate a day at sea in style by visiting Sea Treasures to experience our newly released fall line. Nautical-inspired attire for the whole family that will showcase your unique personality with many looks for everyone. Deck 3, Forward.

NEWLY ARRIVED COLLECTION - LESPORTSAC

Don't miss these chic functional bags by LeSportsac. These colorful bags feature bright patterns with LeSportsac's signature ribbon logo. Hand bags, totes, backpacks, attaches, and more, all with amazing savings! Available in White Caps, Deck 3, Forward.

TAG HEUER TIMEPIECES

Over 150 years of excellence in keeping time, proudly worn all over the world, and available here on the Disney Dream. White Caps, Deck 3, Forward.

NIKE APPAREL DEAL

Buy one piece of any Nike apparel and get another Nike piece 20% off. Polos, shorts, and caps available. You are sure to hit a hole-in-one with this amazing offer! Sea Treasures, Deck 3, Forward.

A PICTURE PAINTS A THOUSAND WORDS

Re-live your cruise experience for years to come with a piece of exclusive Disney Cruise Line art. The gallery is your home to art by famous Disney artists like Thomas Kinkade and Britto. Celebrate Holidays with our newly arrived Mickey Santa figurine. Discounted shipping available on two or more pieces of art. Vista Gallery, Deck 4, Midship.

TAX AND DUTY FREE

Tax and duty free shopping right here onboard! The best brands in everything you desire. Fossil watches, Effy jewelry, Chanel fragrances, and more. Buy onboard and we will package it safely for your journey home. White Caps, Deck 3, Forward.

Due to port regulations, when the ship is docked, the stores will remain closed.



PAMPER PACKAGE

50 minute full body Swedish massage, foot and ankle massage, Indian scalp massage and 25 minute facial.

75 minute pamper for \$149.

In Port Pricing: Receive \$30 off all signature spa services booked and received today!

Senses Spa, Deck 11, Forward, Ext 7-1465

DOONEY & BOURKE ON THE DREAM

Disney Cruise Line has inspired these quality bags once again. This collection features a nautical blue and white theme and is adorned with the Disney Cruise Line wave logo. Our four ships collection features the names of the Magic, Wonder, Dream, and Fantasy, and even everyone's best pal, Mickey Mouse!

There are different shapes, sizes, and styles to fit your needs. Come find the bag that is right for you.

WHITE CAPS
Deck 3, Forward



Lobby Atrium, Deck 3, Midship

Lifestyle & Ships Bow - Six Guests maximum

5:15 p.m. - 6:00 p.m., 7:15 p.m. - 8:30 p.m. & 9:30 p.m. - 10:30 p.m.

Grand Staircase - Groups accommodated

7:15 p.m. - 8:30 p.m.

**Please note that photos are available for viewing on our interactive photo kiosks approximately three hours after being taken and are only available for purchase during this cruise.*

IMPORTANT INFORMATION

Security Notice

All Guests (including children) who wish to disembark the ship are required to present their Key to the World card at the gangway. A photo ID is also required for those Guests who are 18 years of age or older. Guests under the age of 18 are required to have a Parent, Guardian or other responsible adult sign an authorization form at the time it is given out if they wish to go ashore unaccompanied. Authorization forms are available at the gangways and Guest Services.

Cold and Flu Reminder

Please wash hands frequently and thoroughly, particularly before meals. Contact the Health Center by dialing 7-1923, should anyone in your party become ill.

Corridor Quiet Hours

As a courtesy to all our Guests, please recognize quiet hallway hours from 10:00 p.m. til 8:00 a.m.

Inclement Weather

For the safety of all Guests, outdoor events may be changed due to unforeseen weather conditions.

Environmental Message

With Disney's commitment to the Environment, please refrain from throwing anything over the Ship's side. Thank you!

No Reserved Seats Policy

As a courtesy to all our Guests, we kindly advise that the saving of seats is not permitted in the Walt Disney Theatre, and the saving of the sun loungers is not permitted on Deck 11, 12 and 13. Items left unattended will be returned to lost and found at Guest Services, Deck 3 Midship.

Smoking

For the comfort of our guests the following areas are designated as Smoking areas:

- Deck 13, Forward, port side, by "Currents"
- Deck 12, Aft, port side outdoor area that is accessible through the Meridian Lounge
- Deck 4, Aft, port side from 6:00 p.m. to 6:00 a.m. only (all of Deck 4 is no smoking from 6:00 a.m. to 6:00 p.m.)

-Smoking is permitted on stateroom verandahs. Smoking is prohibited inside all guest staterooms. Guests found smoking in their staterooms will be charged a \$250 stateroom recovery fee.

Walt Disney Theatre

Theatrical performances may use artificial fog, strobe lights, pyrotechnics and other special effects. For the safety of our performers and the comfort of those around you, the use of any photography, video recording devices or any electronic equipment is prohibited.

Verandah Safety

Please do not leave any combustible materials on your balcony when not present in your stateroom for safety reasons.

Morning	8:30	8:45	9:00	9:15	9:30	9:45	10:00	10:15	10:30	10:45	11:00	11:15	11:30	11:45	12:00	12:15	12:30	12:45	1:00	1:15	1:30															
FUNNEL VISION	Snow White (G) Funnel Vision						Hercules (G) Funnel Vision						Virtual Tours	Guest DJ Christian Gama Spins by the Pool Deck 11, Midship																						
MOVIES							Frankenweenie (PG) DOLBY 3D Buena Vista Theatre						The Odd Life of Timothy Green (PG) PG Buena Vista Theatre >2:04 p.m.																							
CHARACTER	Princess Gathering Lobby Atrium			Minnie Dk 4, Balcony			Tinker Bell Lobby Atrium						Donald Dk 4, Balcony																							
FUN FOR ALL AGES	Last Minute Shopping Advice with Summer & Vlad Shopping Desk, Deck 4, Midship						Puzzle Playtime Oceaneer Club						Disney TRIVIA 687 Pub						Chip It GOLF Lobby Atrium																	
	Disney Vacation Club Member Celebration Evolution						Adventures to Neverland Oceaneer Club						Making of the Dream Evolution						Family Crafts D Lounge																	
ADULTS	Friends of Bill W. Outlook			Wake Up & Stretch Senses Spa & Salon			Group Cycling Senses Fitness Center						Sports Trivia 687 Pub																							
	Walking in Comfort Seminar Senses Fitness Center						Acupuncture: A Life Changing Experience Senses Spa & Salon						Champagne Tasting (21+) Pink (Nominal Fee/Pre Book)																							
VIBE							Youth Activities Open House						Hangin' in Vibe																							
EDGE	Youth Activities Open House						Open for Tweens						Gender Wars																							
OCEANEER LAB							Stitch's Adventure Squad			Piston Cup			Super Sloppy Science			Lunch			Stitch's Adventure Squad																	
OCEANEER CLUB	Youth Activities Open House						Big Top Fun Fest						Cruisin' With Crush			Lunch			Memory Wall			So You Want To Be A Pirate?														
							"Puzzle Playtime" 9:45 a.m. - 10:15 a.m.			"Adventures to Neverland" 10:30 a.m. - 11:00 a.m.																										
Afternoon	1:45	2:00	2:15	2:30	2:45	3:00	3:15	3:30	3:45	4:00	4:15	4:30	4:45	5:00	5:15	5:30	5:45	6:00	6:15	6:30	6:45															
FUNNEL VISION	A Muppet Christmas Carol (G) Funnel Vision						Virtual Tours						The Little Mermaid (G) Funnel Vision						Pixar Shorts (G) Funnel Vision																	
MOVIES							Buena Vista Theatre LINCOLN Rated PG-13						Brave (PG) DOLBY 3D Buena Vista Theatre >7:15 p.m.																							
CHARACTER	Mickey Mouse Deck 4, Balcony			Santa Claus Lobby Atrium			Minnie Mouse Lobby Atrium						Mickey Dk 4, Balcony			Jack Sparrow Preludes			Tinker Bell Lobby Atrium																	
FUN FOR ALL AGES	WALT DISNEY THEATRE RATED: PG DOLBY 3D						Bingo Pre Sales						Senses Spa BINGO D Lounge						VILLAINS TONIGHT! Walt Disney Theatre																	
	Animation: Creating a Character D Lounge						Pictionary Challenge D Lounge						Jewish Sabbath Outlook						A Pirate's Life for Me D Lounge																	
ADULTS	Making of the Dream Evolution			Art of The Theme Show Tour Meet at Meridian			Martini Tasting (21+) Meridian (Nom Fee) 687 Pub						18*21 X-Box Challenge 687 Pub			ESPN Dream Team Draft Day 687 Pub																				
	Tony Delaney LIVE Quiet Cove - Live Guitar						Detox for Health & Weight Loss Senses Fitness Center						Tony Delaney LIVE Quiet Cove - Live Guitar			Tequila & Margarita Tasting (21+) Evolution (Nominal Fee/Pre Book)																				
VIBE	Smoothie Time						Gingerbread House Making						DJ Training			Super Sloppy Science			Sports Deck			Open House														
EDGE							Animation Antics						Gingerbread House Making						Sports Deck						Mini Golf											
OCEANEER LAB	Youth Activities Open House "Super Sloppy Science" 2:45 p.m. - 3:30 p.m.						Magic Show						Get The Hook						Dinner						A Pirate's Life for Me											
OCEANEER CLUB	So You Want To Be A Pirate?						Aloha Luau						Tinker Bell's Talent Show						Once Upon a Time						Dinner						So You Want To Be A Pirate?					
Evening	7:00	7:15	7:30	7:45	8:00	8:15	8:30	8:45	9:00	9:15	9:30	9:45	10:00	10:15	10:30	10:45	11:00	11:15	11:30	11:45	12:00															
FUNNEL VISION	Mickey's Pirates Deck Stage						Muppet Treasure Island (G) Funnel Vision						Buccaneer Blast & Club Pirate						POTC: The Curse of the Black Pearl (PG-13) Funnel Vision																	
MOVIES							Brave (PG) DOLBY 3D Buena Vista Theatre						Buena Vista Theatre LINCOLN Rated PG-13 > 1:32 a.m.																							
CHARACTER	Stitch Dk 4, Balcony			Jack Sparrow Preludes			Mickey's Pirates Deck Stage						Stitch Preludes			Tinker Bell Atrium			Mickey Dk 4, Balcony			Donald Atrium														
FUN FOR ALL AGES	Pirate Games Deck Stage, Deck 11, Midship						VILLAINS TONIGHT! Walt Disney Theatre						A PIRATE'S LIFE FOR ME D Lounge						Buccaneer Blast Fireworks followed by Club Pirate Deck Stage, Deck 11, Midship																	
	NBA: Boston Celtics vs. Philadelphia 76ers 687 Pub (Subject to satellite availability and blackouts)						NBA: Los Angeles Lakers vs. Oklahoma City Thunder 687 Pub (Subject to satellite availability and blackouts)						Adult Krazy Karaoke followed by Evolution Nightclub Evolution																							
ADULTS	EnharmoniQ LIVE District Lounge - Live Music						Cognac Tasting (21+) Meridian (Pre Book/Nom Fee)						18*21 Mixer Currents			EnharmoniQ LIVE District Lounge - Live Music																				
	Youth Activities Open House						Teen AquaDuck						Pump It Up						Fireworks			Gender Wars			A Pirate's Life For Me											
EDGE	Anyone Can Cook						Tween AquaDuck						That's Hilarious						Fireworks			Club Pirate			A Pirate's Life For Me											
OCEANEER LAB	Anyone Can Cook						POTC: Tides of Fortune						Magic Playfloor			Super Sloppy Science						Monster's Inc, Open "Mike" Night			Animation Antics											
OCEANEER CLUB	Little Einsteins						Magic Playfloor						Once Upon a Time						Pluto's PJ Party						Youth Activities Open House "Magic Playfloor" 11:00 p.m. - 11:30 p.m.											

Symbol for activities that will be repeated during the cruise



FOLD

Fold along the dotted lines and take me with you so you don't miss any of the fun!

FOLD

IN THE SPOTLIGHT SERIES
SOLVE IT! SERIES

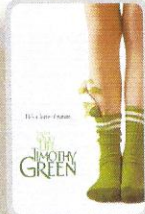
JUMP UP! SERIES
CREATE & INVENT SERIES

CLUBHOUSE SERIES
STORYBOOK SERIES

BUENA VISTA THEATRE



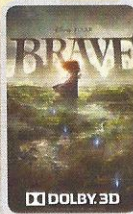
10:15 a.m.
Run Time:
1 hr 31 min
Rating: PG



12:15 p.m. - **PG**
Run Time:
1 hr 49 min
Rating: PG



2:30 & 11:00 p.m.
Run Time:
2 hr 32 min
Rating: PG-13



5:30 & 8:15 p.m.
Run Time:
1 hr 45 min
Rating: PG

Character Appearances

PRINCESS GATHERING
Lobby Atrium - 9:00 a.m.

HOOK & SMEE
Preludes - 10:00 p.m.

MINNIE MOUSE
Deck 4, Balcony - 9:30 a.m.
Lobby Atrium - 4:45 p.m.

JACK SPARROW
Jack Sparrow
5:30 pm. & 7:30 p.m.

TINKER BELL
Lobby Atrium
9:30 a.m., 2:30 p.m.
5:15 p.m. & 9:45 p.m.

STITCH
Deck 4, Balcony - 7:00 p.m.
Preludes - 9:30 p.m.

DAISY DUCK
Lobby Atrium - 9:30 p.m.

DONALD DUCK
Deck 4, Balcony - 1:00 p.m.
Lobby Atrium - 10:00 p.m.

DISNEY FRIENDS
Lobby Atrium - 2:15 p.m.

MICKEY MOUSE
Deck 4, Balcony
2:15 p.m., 5:15 p.m.
& 9:30 p.m.

SANTA CLAUS
Lobby Atrium - 3:15 p.m.



Don't forget your Camera to capture those Magical Moments!

For details of daily Disney character appearances, refer to the character line in your Navigator Grid or the digital character board in the Lobby Atrium.

YOUTH ACTIVITIES THEMED EXPERIENCES

CLUBHOUSE SERIES
focuses on movement and features content which appeals to younger children.

JUMP UP! SERIES
includes large ground games & movement-oriented activities.

IN THE SPOTLIGHT SERIES
focuses on children's stage presence with lots of activities and enthusiasm.

STORYBOOK SERIES
is designed with a strong connection to the Disney classic stories.

CREATE & INVENT SERIES
will have a tactile focus allowing children to create and admire their work.

SOLVE IT! SERIES
are less active, but will challenge children with problem/solutions based activities.

OPEN HOUSE

activities for families, adults and children of all ages to enjoy together.

SHIP DIRECTORY

YOUTH ACTIVITIES

DISNEY'S OCEANEER CLUB	DECK 5, MID	11:00 A.M. - 11:00 P.M.
DISNEY'S OCEANEER LAB	DECK 5, MID	9:00 A.M. - 1:00 A.M.
EDGE	DECK 13, MID	10:00 A.M. - 1:00 A.M.
VIBE	DECK 4, FWD	11:00 A.M. - 2:00 A.M.
IT'S A SMALL WORLD NURSERY	DECK 5, MID	9:00 A.M. - 1:00 A.M.

RECREATION

AQUADUCK	DECK 12, MID	9:00 A.M. - 8:30 P.M.
GOOBY'S SPORTS DECK	DECK 13, AFT	12:00 A.M. - 6:00 P.M.
DONALD'S POOL	DECK 11, MID	6:00 A.M. - 5:00 P.M.
GOLF/SPORTS SIMULATORS	DECK 13, AFT	11:00 A.M. - 6:00 P.M.
GOOBY & MAX'S MINI GOLF	DECK 13, AFT	8:00 A.M. - 8:30 P.M.
MICKEY'S POOL	DECK 11, MID	6:00 A.M. - 5:00 P.M.
MICKEY'S SLIDE	DECK 11, MID	9:00 A.M. - 6:00 P.M.
MIDSHIP DETECTIVE AGENCY	DECK 5, MID	8:00 A.M. - 11:00 P.M.
NEMO'S REEF	DECK 11, MID	9:00 A.M. - 6:00 P.M.
PORT ADVENTURES DESK	DECK 5, MID	8:00 A.M. - 11:00 A.M. 6:00 P.M. - 8:30 P.M.
QUIET COVE POOL	DECK 11, FWD	6:00 A.M. - 12:00 MID
SENSES FITNESS CENTER	DECK 11, FWD	6:00 A.M. - 10:00 P.M.

GENERAL INFORMATION

ARR-CADE	DECK 11, AFT	24 HOURS
DISNEY VACATION CLUB	DECK 4, MID	9:00 A.M. - 11:00 A.M. 5:30 P.M. - 10:00 P.M.
FUTURE CRUISE SALES DESK	DECK 4, MID	8:00 A.M. - 10:00 A.M. 3:00 P.M. - 9:30 P.M.
GUEST SERVICES	DECK 3, MID	24 HOURS
MEDICAL HEALTH CENTER	DECK 1, FWD	9:30 A.M. - 11:00 A.M. 4:30 P.M. - 7:00 P.M.
PORT & SHOPPING DESK	DECK 4, MID	8:00 A.M. - 10:00 A.M.
PRELUDES	DECK 3, FWD	5:45 P.M. - 6:30 P.M. 8:00 P.M. - 8:45 P.M.
SENSES SPA AND SALON	DECK 11, FWD	8:00 A.M. - 10:00 P.M.
SHUTTERS PHOTO GALLERY	DECK 4, MID	5:00 P.M. - 11:00 P.M.

SHOPPING

MICKEY'S MAINSAIL	DECK 3, FWD	7:00 P.M. - 11:00 P.M.
SEA TREASURES	DECK 3, FWD	7:00 P.M. - 11:00 P.M.
WHITE CAPS	DECK 3, FWD	7:00 P.M. - 11:00 P.M.
VISTA GALLERY	DECK 4, MID	7:00 P.M. - 11:00 P.M.
QUACKS	DECK 11, MID	7:00 P.M. - 11:00 P.M.
WHOZITS & WHATZITS	DECK 11, MID	7:00 P.M. - 11:00 P.M.

All Ashore: Approx. 9:45 a.m.
All Aboard: 6:00 p.m.

SHIP'S AGENT IN NASSAU

Nassau, Bahamas
R.H. Curry & Company, 303 Shirley
St., P.O. Box N8168 Nassau, Bahamas
242-323-8425 or 242-357-9218

IMPORTANT NUMBERS

Fire/Security: 7-3001
Medical Emergency: 7-3000
Health Center: 7-1923

DINNER MENU

Animator's Palate: Pacific Rim Cuisine
Enchanted Garden: Continental Market
Royal Palace: French Dinner
Dining Times: 5:45 p.m. & 8:15 p.m.

DRINK OF THE DAY

Yellow Bird (Alcoholic)
Parrot Song (Non Alcoholic)

WEATHER FORECAST

Friday: Sunny
High: 75°F/24°C
Saturday: Partly Sunny
High: 73°F/23°C

Evening Attire: Pirate /Cruise Casual

DINING & LOUNGES

BREAKFAST

CABANAS CONTINENTAL	DECK 11, AFT	7:00 A.M. - 7:30 A.M.
CABANAS	DECK 11, AFT	7:30 A.M. - 10:30 A.M.
ENCHANTED GARDEN	DECK 2, MID	8:00 A.M. - 10:30 A.M.
ROYAL PALACE	DECK 3, MID	8:00 A.M. - 9:30 A.M.

LUNCH

CABANAS	DECK 11, AFT	12:00 P.M. - 2:00 P.M.
PIZZERIA AT CABANAS	DECK 11, AFT	2:00 P.M. - 4:00 P.M.
FILLMORE'S FAVORITES	DECK 11, MID	11:00 A.M. - 6:00 P.M.
LUIGI'S PIZZA	DECK 11, MID	11:00 A.M. - 6:00 P.M.
ROYAL PALACE	DECK 3, MID	12:00 P.M. - 1:30 P.M.
TOW MATER'S GRILL	DECK 11, MID	11:00 A.M. - 6:00 P.M.

DINNER

ANIMATOR'S PALATE	DECK 3, AFT	5:45 P.M. & 8:15 P.M.
ENCHANTED GARDEN	DECK 2, MID	5:45 P.M. & 8:15 P.M.
ROYAL PALACE	DECK 3, MID	5:45 P.M. & 8:15 P.M.
CABANAS TABLE SERVICE	DECK 11, AFT	6:30 P.M. - 8:30 P.M.
TOW MATER'S GRILL	DECK 11, MID	6:00 P.M. - 11:00 P.M.
PALO & REMY (18+)	DECK 12, AFT	6:00 P.M. - 9:00 P.M.

(RESERVATION REQUIRED & COVER CHARGE APPLICABLE. DIAL #7-9734)

LATE NIGHT SNACKS

CABANAS - PIRATES MENU	DECK 11, AFT	10:45 P.M. - 11:30 P.M.
LUIGI'S PIZZA	DECK 11, MID	9:30 P.M. - 12:30 A.M.

ADDED FEATURES

BEVERAGE STATION	DECK 11, AFT	24 HOURS
EYE SCREAM	DECK 11, MID	11:00 A.M. - 12:30 A.M.
ROOM SERVICE	DIAL 0	24 HOURS

ENTERTAINMENT - LOUNGES - BARS

Adults must be 21 and older to consume alcoholic beverages.

687	DECK 4, AFT	5:00 P.M. - 9:00 P.M.
687 (18+)	DECK 4, AFT	9:00 P.M. - 12:30 A.M.
BON VOYAGE	DECK 3, MID	9:00 A.M. - 11:00 P.M.
COVE BAR (18+)	DECK 11, FWD	10:30 A.M. - 11:30 P.M.
COVE CAFE (18+)	DECK 11, FWD	7:00 A.M. - 12:00 MID
CURRENTS (18+)	DECK 13, FWD	11:00 A.M. - 12:00 A.M.
D LOUNGE	DECK 4, MID	SHOWTIMES
DISTRICT LOUNGE	DECK 4, AFT	4:00 P.M. - 9:00 P.M.
DISTRICT LOUNGE (18+)	DECK 4, AFT	9:00 P.M. - 12:00 MID
EVOLUTION (18+)	DECK 4, AFT	10:00 P.M. - 2:00 A.M.
FROZONE TREATS	DECK 11, MID	11:00 A.M. - 11:30 P.M.
MERIDIAN (18+)	DECK 12, AFT	5:00 P.M. - 12:30 A.M.
PINK (18+)	DECK 4, AFT	5:00 P.M. - 12:30 A.M.
SKYLINE (18+)	DECK 4, AFT	5:00 P.M. - 12:30 A.M.
VISTA CAFE	DECK 4, MID	7:30 A.M. - 11:00 P.M.
WAVES	DECK 12, AFT	12:00 P.M. - 9:00 P.M.

Consumers who order raw or partially cooked, ready-to-eat food of animal origin, are hereby informed that the food is not sufficiently cooked to ensure its safety.



IMPORTANT INFORMATION

Please check your Port Adventure tour tickets for meeting times and locations. Visit the Port Adventures Deck 5, Midship, for any questions.